

[r]
[rastelli]

ESTERO
FEBBRAIO 2023

CAVALLERI
COMUNICAZIONE



Rastelli alongside a2-Sb with a new project by Il Bagno and Sebastian Belle

RASTELLI as Manufacturers



[View Gallery](#)

The Progetto P is a natural and architectural paradise signed by Il Bagno and Sebastian Belle of a2-Sb and realized in collaboration with Rastelli. The contemporaneity of this “vertical forest” in red cedar and concrete, designed by Il Bagno and defined by the sensitivity of the interior designer Sebastian Belle, relies on Rastelli Made in Italy for the interior design. The collaboration of the Rastelli brand emphasizes the sculptural look of the entire building, in which transparency and natural light transform themselves in structural elements, bringing the same elegance inside as outside.





That of Rastelli for Progetto P has been a real in-depth study on the ductility of materials that, interacting with each other, convey a meticulous formal balance: the solid and compact presence of the island, with the worktop in Calacatta quartzite, and of the doors in walnut essence which frame the tall units with a Nero Ingo Fenix oven of the R1 kitchen, tell all the artisanal experience and the technological development of the Abruzzi company.

An invitation to share the home warmth, not only in the kitchen but in every space of the house. As in a musical score, all the decorations are harmonically conceived to follow a pursuit of perfection that avoids any visual conflict: the dining and living areas freely unfold, accompanied by the Croatian stone of Selina and by the movements of the crossings which modulate the natural light. «The desire was that of including all the vibrations of the natural light to create changing atmospheres in accordance with the hour of the day but also of the seasons» affirms the architect, Sebastian Belle.

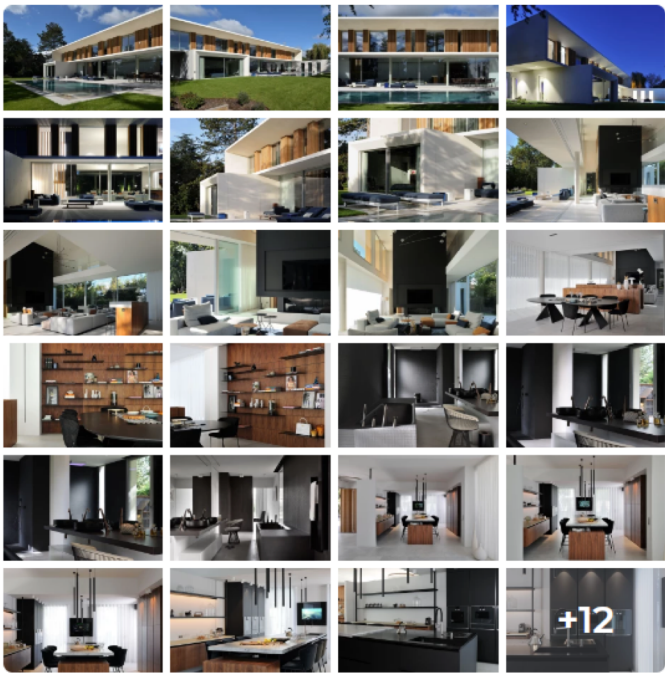




To create continuity with the living area, have been included in the design bookcases, equipped panels and open modules in black steel with shelves by Rastelli. The undisputed protagonist of the living area is the 6 Mt tall fireplace in solid wood coated with black Fenix, as the R1 kitchen. With its upward motion, it aligns with the verticality of the stair that leads to the master suite. To respect the formal rigor and a certain volumetric balance, slim finishes have been chosen for all the décor. To complete the living area, the bar counter in walnut essence was designed by the interior designer Belle, too.



The bathroom, connected to the master suite through a dressing room, is mainly defined by the black dominant upon which not only the mosaic (Bisazza) but also the ceramic (Valdama) has been built. Only element of chromatic contrast are the taps in Cono copper finish (Prospero Rasulo – Gessi). The functionality of the R1 system by Rastelli has been essential to interpret in a contemporary and personal key the architectural reflection of Il Bagno and Sebastian Belle of a2-Sb.



Project Credits

[r] RASTELLI
[rastelli] Manufacturers

Follow

a2-5b
Architects

Follow

Studio Erick Saill...
Photographers

Follow

[r]
[rastelli]

ESTERO
OTTOBRE 2023

CAVALLERI
COMUNICAZIONE

inner

The International Digital Magazine of:
Architecture - Interior Design - Furniture & More....

Design

Sept. - Oct. - Nov. 2023

N°12

**CLASSIC CONTEMPORARY
MANSION IN SAUDI ARABIA
BY AMAL QAMBER**

**NEW DELHI: AN URBAN REFUGE
BY RACHNA AGARWAL**

**AN APARTMENT IN AMMAN
BY MOHAMMED AMMAR**

ACCESSORIES - ARTS - DOORS - KITCHEN - BATHROOM...



KITCHEN

SHAPING RASTELLI'S KITCHENS

C. Cavalieri

Marco Fabrizio Corti, Makio Hasuike & Co., Ferruccio Laviani, Ulisse Narcisi, Karim Rashid are Rastelli's game changers.

Names and faces sharing projects, visions, and contemporary languages to tell Rastelli's Made in Italy worldwide.

Thanks to Rastelli's experience in kitchens design and the creativity of every partner designer, present and past live together creating different domestic spaces to satisfy also the most sophisticated needs.

Every kitchen signed Rastelli unveils a common story: the one of those who choose it for their homes and, even before, the one of those who designed it keeping in mind the final consumer.

The concept of customizable simplicity is well portrayed by the linear and neat **Royale** by Marco Fabrizio Corti. A place to live and to be organized to taste: the storage units and open cabinets like bookshelves, together with ▶

254 Inner Design

Inner Design 255



KITCHEN

tall units and accessories cabinets, are crucial to place all the necessary in the kitchen but are also perfect in the living area. ➤



256 Inner Design



Inner Design 257







Everything is lightened by shelves and units made by panels and shelves in drilled metal.

Beluga is a composition studied in every detail: all its elements represent the parameters of an essential geometry, capable of valorizing and underlining materials and shades. ➤

■ KITCHEN



Once again, a minimalist line transformed the kitchen in the polyhedric core of the house: a space open to sociality, relations and, of course, life. R1, designed by **Ulisse Narcisi**, talks about this, immediately appearing a system of plain modules and sharp lines. The wide range of elements and finishes in the catalogue exalts its versatility and the many personalization possibilities for the most contemporary needs. ➤



■ KITCHEN



266 Inner Design



Inner Design 267



268 Inner Design



Inner Design 269

KITCHEN



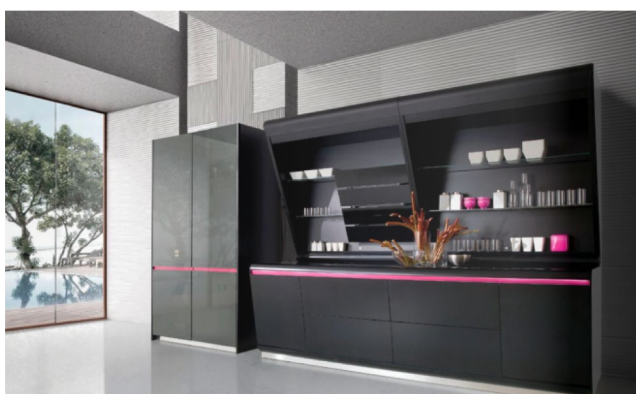
The same ability to reinvent themselves and always step with the times, inborn in Rastelli, returns also in the kitchen models designed by Karim Rashid. If Karan is recognizable for the strict geometry of its island, characterized by a rational and ergonomic layout of all its parts, Kook force is in the bold use of colours.

An intrepid statement also within materials: the Solid Surface allows a spectrum of technological solutions that transform cooking in a unique and original experience, every day.

In Rashid's vision also light is coloured by bright shades: the profiles of the groove opening of wall cabinets is lightened by a LED system that boosts the visual impact of the composition.







274 Inner Design



Inner Design 275

KITCHEN



276 Inner Design

Going beyond the traditional thinking that commonly interprets the kitchen to try to get closer to nature: this is what **Makio Hasuike & Co.** wanted to bring in their last creation for **Rastelli – Bosco**. Here, as in nature, the protagonists of domestic architecture are scents, lights, and fresh air. In the union between solidity and lightness, lights and shades, freely returns the alternation of materials to soothe the senses. A timeless space that comes closer to industrial design, filtered also by the Japanese culture, an innovative and versatile inspiration for **Makio Hasuike & Co.**

Rastelli's design is signed and represented by international designers ready to go deep in the conception of a kitchen build upon aesthetic values as well as on the knowledge of the purely Italian Saper Fare. **o**

Inner Design 277